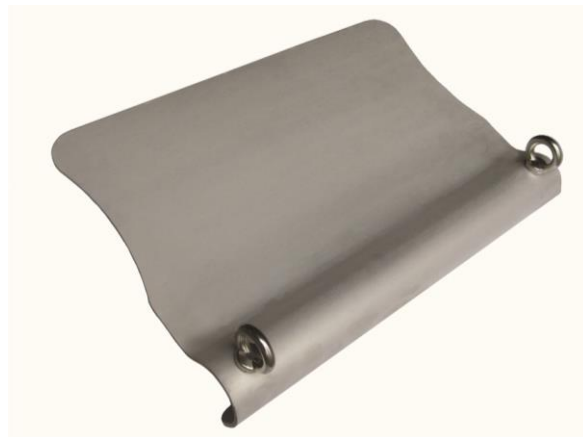


safetylink™

ROPE GUIDE BRACKET INSTALLATION

**WARNING:
NO PART OF THIS BRACKET IS INTENDED OR RATED AS
ANY FORM OF ANCHOR POINT**

ONE PERSON USER



READ ENTIRE HANDBOOK BEFORE INSTALLING ANY SAFETYLINK PRODUCT.
ALL PRODUCTS MUST BE INSTALLED IN ACCORDANCE WITH SAFETYLINK'S INSTALLATION
HANDBOOK, USING ONLY PRODUCTS SUPPLIED BY SAFETYLINK PTY LTD.
**FAILURE TO FOLLOW ALL WARNINGS AND INSTRUCTIONS MAY RESULT
IN A SERIOUS INJURY OR DEATH.**

If you are uncertain and need help please email: safetylink@heightsafety.com.au
Phone: 1300 789 545 | Fax: 1300 738 071
or visit our website www.heightsafety.com



ROPE GUIDE BRACKET

MAINTENANCE – PERIODIC INSPECTIONS	3
WARRANTIES	4
ROPE GUIDE BRACKET	5
<i>Product Code: LADFX007</i>	5
INSTALLATION	5
FOR STEEL ROOFS	5
FOR TILED ROOFS	5
ROPE GUIDE BRACKET	6
FIXING TO CONCRETE WALL/PARAPET	6
FIXING TO TIMBER WALL/PARAPET	6
DIAGRAM 2 – POSITIONING LAYOUT.....	7
IN CASE OF ACCIDENT	8

SafetyLink’s Rope Guide Bracket is uniquely designed to mimic the protective properties of our patented Fixed LadderLink.

- *Made from Marine Grade Aluminium.*
- *Protects your ropes being damaged when abseiling over a sharp edge or gutter.*
- *Guides your ropes.*
- *Protects the guttering systems from rope pressure and damage.*
- *Easy to install and unobtrusive.*
- *Can be permanently installed or removed after use.*
- *One person user.*

The Rope Guide Bracket has two collared eyebolts attached, these are not to be used as load rated anchors in any situation. The collared eyebolts are present to ensure that the abseil ropes will stay in there desired location and do not slip from the bracket. It is recommended that a strap be used between the collared eyebolts to secure the abseil ropes so they cannot unintentionally leave the Rope Guide Bracket.

MAINTENANCE – PERIODIC INSPECTIONS

All items of equipment which are in regular use shall be subjected to periodic inspection and servicing. These regular scheduled inspections and servicing must be carried out by a competent person.

Fixed LadderLink: Ladder Support Bracket and Rope Guide Brackets

ALL BRACKETS MUST BE INSPECTED EVERY 12 MONTHS, INSPECTIONS NEED TO BE CARRIED OUT BY A COMPETENT PERSON.

Procedures to be followed at inspection time:

- Visually inspect the brackets for any signs of deterioration or the protective coating being removed. (*Note: LadderLink/Rope Guide Bracket is made from marine grade aluminium and therefore should not corrode*).
- Ensure LadderLink/Rope Guide Bracket is firmly secured to the structure as per SafetyLink Installation Handbook.
- Manually (by hand) check the small eyebolts on the Rope Guide Bracket for rigidity and tightness, if the eyebolt can turn in the anticlockwise direction it will require attention.

SafetyLink Anchorages

ALL ANCHORAGES MUST BE INSPECTED EVERY TWELVE MONTHS, INSPECTIONS NEED TO BE CARRIED OUT BY A COMPETENT PERSON.

Procedures to be followed at inspection time:

- Visually inspect anchors for signs of deterioration.
- The FrogLink/TileLink anchor point has two energy absorbing regions and two stabilising joints which hold the eyelet in place during use. If these energy absorbing regions are expanded this will indicate the anchor point has arrested a fall. Similarly if the two stabilising joints have been broken this would also indicate the FrogLink/TileLink has arrested a fall and should be replaced.
- Visually inspect the CableLink anchor point for signs that it has arrested a fall. The cable will have tightened around the rafter and the bottom fixing point will be pulled out and the anchor will need to be replaced.
- The eyebolt should remain straight, a bent eyebolt will indicate that the anchor point has arrested a fall (*The design features of the eyebolt includes the ability to bend like a fishing pole starting from the top and working its way to the bottom, enabling it to use up energy as the eyebolt bends whilst lessening the force on the person falling and the attachment point*).
- Visually inspect the components of the anchor for corrosion, superficial surface marking is permitted while deeper corrosion or pitting would require attention.
- Manually (by hand) check the eyebolt for rigidity and tightness, if the eyebolt can turn in the anticlockwise direction it will require attention.
- Visually inspect the rubber hat washer and waterproofing components to ensure it has remained sealed.
- Visually inspect the attachment component of the anchorage where practically possible.
- Visually inspect the parent structure for modifications or deterioration which might lead to loss of anchorage strength.
- Drilled in anchorages such as friction or glued-in anchorages (ConcreteLink, SandwichLink, SpacerLink) must be proof tested in accordance with AS/NZS 1891.4:2009 Clause 3.1.2(g) as part of each inspection.

IN ADDITION TO SAFETYLINK PTY LTD EQUIPMENT, ALL ANCILLARY EQUIPMENT MUST BE INSPECTED IN ACCORDANCE WITH AUSTRALIAN AND NEW ZEALAND STANDARDS AND THE MANUFACTURER'S INSTRUCTIONS.

 FOR MAINTENANCE ADVICE AND SERVICES PLEASE CONTACT SAFETYLINK ON 0249 972272 OR 1300 789545 FOR YOUR NEAREST SAFETYLINK INSPECTION SERVICE CENTRE OR EMAIL: safetylink@heightsafety.com.au

To download Installation Manuals on other SafetyLink products please visit our

Website at www.heightsafety.com

EXTRACT: SafetyLink Pty Ltd STANDARD TERMS AND CONDITIONS

- 11.1 To the extent permitted by law all implied conditions, warranties and undertakings are expressly excluded.
- 11.2 Except as provided in this clause the Company shall not be liable for any loss or damage, whether direct or indirect (including consequential losses or damage) arising out of any breach of contract by the Company or any negligence of the Company, its employees or agents.
- 11.3 Should the Company be liable for a breach of a guarantee, condition or warranty implied by the Australian Consumer Law (not being a guarantee, condition or warranty implied by sections 51, 52 and 53 of that Law) then its liability for a breach of any such condition or warranty express or implied shall be limited, at its option, to any one or more of the following.
- A) in case of Goods
- (I) the replacement of the Goods or the supply of equivalent Goods.
 - (II) the repair of the goods,
 - (III) the payment of the cost of replacing the Goods or acquiring equivalent Goods.
 - (IV) The payment of the cost of having the Goods repaired.
- Provided that any such Goods are returned to the Company by the Purchaser at the Purchaser's expense.
- B) in the case of services
- (i) the supply of the services again,
 - (ii) the payment of the cost of having the services supplied again.
- 11.4 The Company will not liable for the costs of recovery of the Goods from the field, loss of use of the Goods, loss of time, inconvenience, incidental or consequential loss or damage, nor for any other loss or damage of her than as stated above, whether ordinary or exemplary, caused either directly or indirectly by use of the Goods.
- 11.5 The Company warrants that at the time of shipment, Products manufactured by it will be free from defects in material and workmanship. In the absence of a modified written warranty, the Company agrees to making good any such defects by repairing the same or at the Company's option by replacement, for a period of (1) one year from the date of shipment. This limited warranty applies provided that:
- (a) defects have arising solely from faulty materials or workmanship;
 - (b) the Products have not received maltreatment, inattention or interference;
 - (c) **the Products have been installed in accordance with the Company's Installation Handbooks using only products supplied by the Company;**
 - (d) accessories used with the Products are manufactured by or approved by the Company ;
 - (e) the Products are maintained in accordance with Australian Standard 1891.4 (section 9).
 - (f) you notify any claim under this warranty to SafetyLink in writing to the address below no later than 14 days after the event or occurrence concerning the produce giving rise to the claim and you pay all costs related to your claim.

This warranty does not apply to any defects or other malfunctions caused to the Goods by accident, neglect, vandalism, misuse, alteration, modification or unusual physical, environment or electrical stress.

Please note that the benefits to the purchaser (as a consumer) given by this warranty are in addition to your other rights and remedies under the Australian Consumer Law. Our goods come with guarantees that cannot be excluded under the Australian Consumer Law. You are entitled to a replacement or refund for a major failure and compensation for any other reasonably foreseeable loss or damage. You are also entitled to have the goods repaired or replaced if the goods fail to be of acceptable quality and the failure does not amount to a major failure.

- 11.6 If any goods are not manufactured by the Company, the guarantee of the manufacturer thereof shall be accepted by the Purchaser as the only express warranty given in respect of the goods.
- 11.7 Except as provided in this clause 11, all express and implied warranties, guarantees and conditions under statute or general law as the merchantability, description, quality, suitability or fitness of the Products for any purpose or as to design, assembly, installation, materials or workmanship or otherwise are hereby expressly excluded (to the extent to which they may be excluded by law).

PLEASE SEE SAFETYLINK PTY LTD FULL STANDARD TERMS OF CONDITIONS OF SALE FOR FURTHER REFERENCE.

INSTALLATION

All safety procedures must be complied with in accordance with the current legislation and regulations. Ensure safety at all times by being attached to suitable anchor points and approved safety equipment or approved scaffolding.

ROPE GUIDE BRACKET

Made from marine grade aluminium the rope guide bracket is designed to guide a user's rope over the building and protect them from any sharp edges. SafetyLink's Rope Guide Bracket is uniquely designed to mimic the protective properties of our patented Fixed LadderLink.

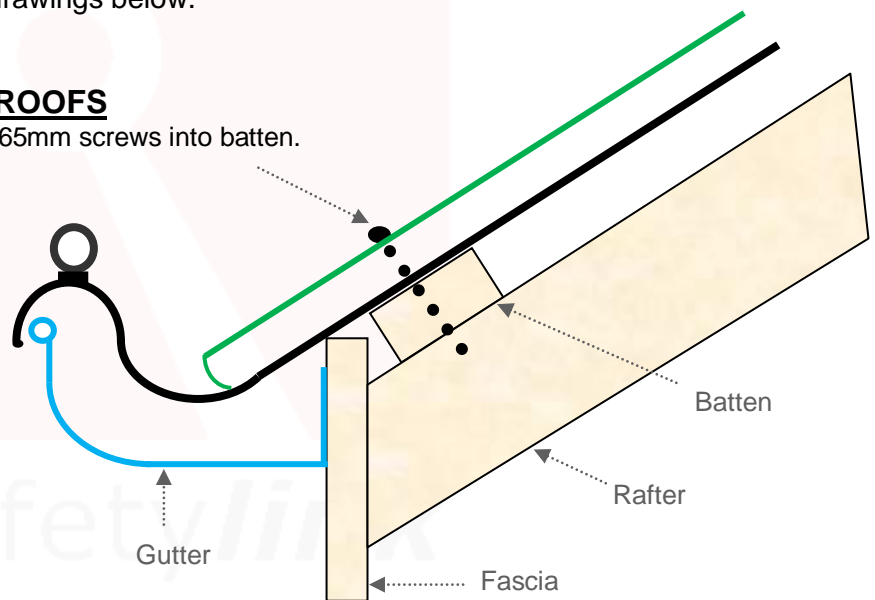
Using the Rope Guide Bracket will prevent rope damage when abseiling over sharp edges or guttering systems. Conversely the bracket will prevent damage to the gutter when in use, expertly guiding the rope exactly where you want them. The rope guide bracket is easy to install and complements any buildings' façade and can be painted to blend in completely. It can also be removed with ease.

- ⚠ **Adjusting the pitch of the Rope Guide Bracket is to be done by a sheet metal fabricators' bending machine. The Rope Guide Bracket is made from high tensile aluminium therefore ensure the bender is set on a high radius to prevent cracking.**
- ⚠ **Protective coating must not be removed.**

To install the Rope Guide Bracket simply place under the roof sheeting or tiles and secure to the top of a rafter and roof batten as shown in the drawings below.

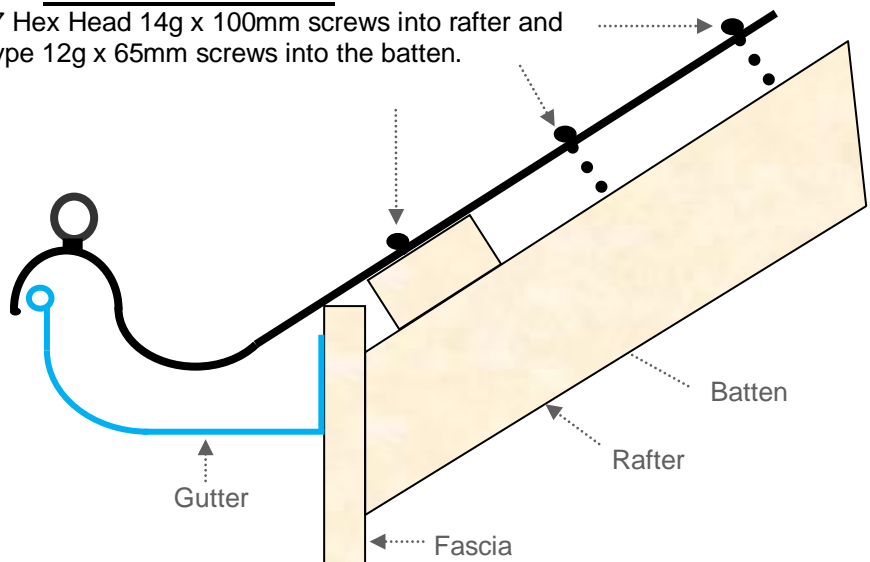
FOR STEEL ROOFS

Use five type 17 Hex Head 12g x 65mm screws into batten.



FOR TILED ROOFS

Use two type 17 Hex Head 14g x 100mm screws into rafter and three type 12g x 65mm screws into the batten.



The Rope Guide Bracket has two collared eyebolts attached, **these are not to be used as load rated anchors in any situation.**

The collared eyebolts are present to ensure that the abseil ropes will stay in their desired location and do not slip from the bracket.

It is recommended that a strap be used between the collared eyebolts to secure the abseil ropes so they cannot unintentionally leave the Rope Guide Bracket.

FIXING TO CONCRETE WALL/PARAPET

Drill and install 4 (four) x 10mm Dyna bolts or equivalent chemical anchor. Bolts need to be a minimum of 150mm from an edge.

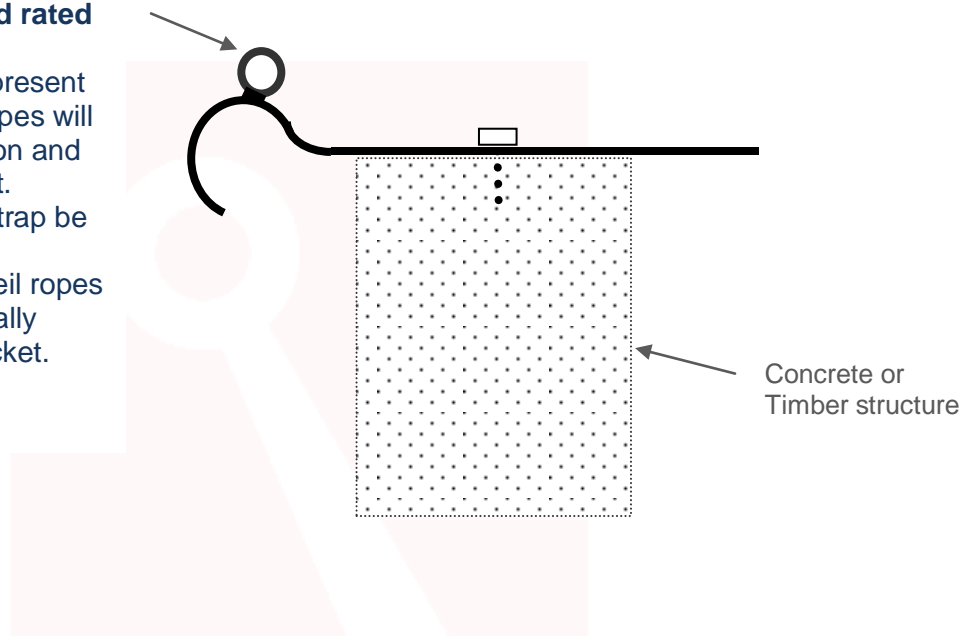
FIXING TO TIMBER WALL/PARAPET

Drill and install 4 (four) x size 14-10 x 75mm roofing screws.

The Rope Guide Bracket has two collared eyebolts attached, **these are not to be used as load rated anchors in any situation.**

The collared eyebolts are present to ensure that the abseil ropes will stay in their desired location and do not slip from the bracket.

It is recommended that a strap be used between the collared eyebolts to secure the abseil ropes so they cannot unintentionally leave the Rope Guide Bracket.



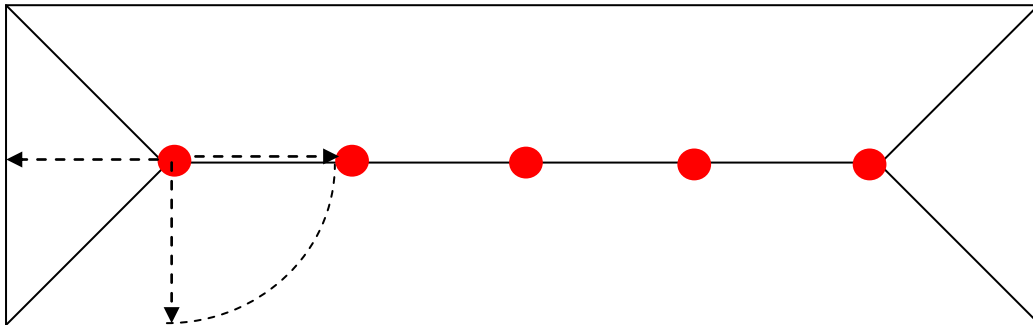
- Made from Marine Grade Aluminium.
- Protects your ropes being damaged when abseiling over a sharp edge or gutter.
- Guides your ropes.
- Protects the guttering systems from rope pressure and damage.
- Easy to install and unobtrusive.
- Can be permanently installed or removed after use.
- **Note: One person user.**

⚠ The Rope Guide Bracket has two collared eyebolts attached, these are not to be used as load rated anchors in any situation. The collared eyebolts are present to ensure that the abseil ropes will stay in their desired location and do not slip from the bracket. It is recommended that a strap be used between the collared eyebolts to secure the abseil ropes so they cannot unintentionally leave the Rope Guide Bracket.

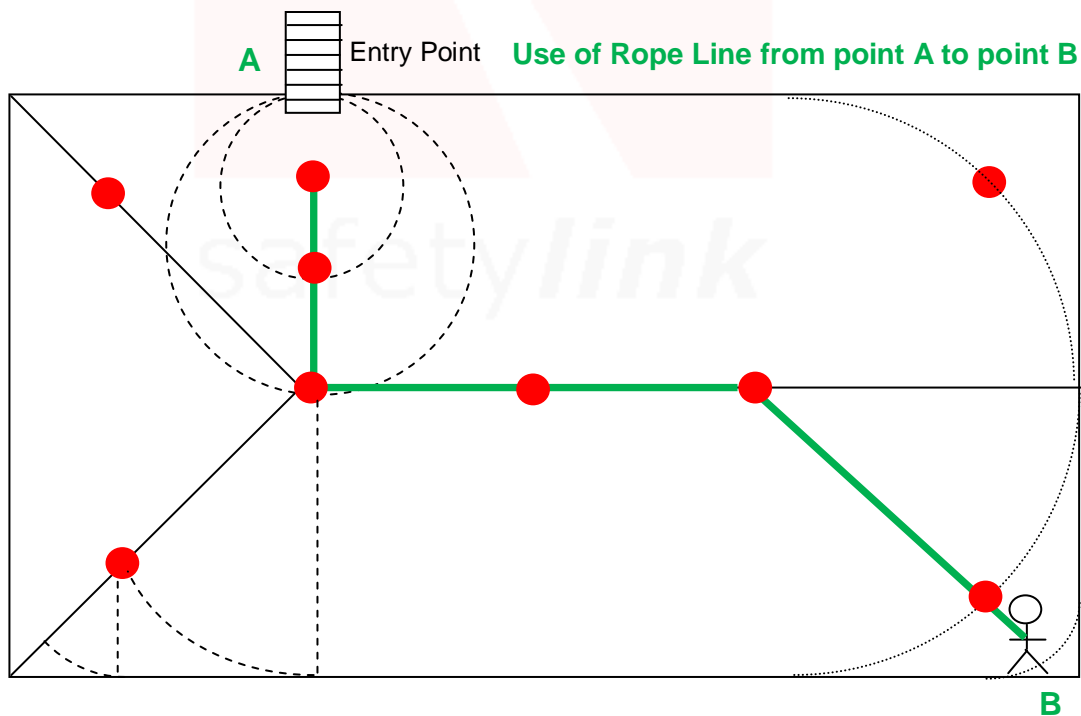
THIS IS A GUIDE ONLY

All working at heights safety procedures must be complied with when installing SafetyLink anchor points. For more information refer to your state or territories current legislation, regulations, policies and codes of practices.

**Spacing must be no greater than the rafter length.
Please contact your distributor if you are unsure.**



ACCESS, LAYOUT AND USE OF A SAFETYLINK ANCHOR SYSTEM
SafetyLink anchor points are positioned by calculating the pendulum effect, this limits the likelihood of a fall past the edge of the roof space. The pendulum effect still applies to a flat roof.



**ATTACH ONLY TO STRUCTURE ABLE TO SUPPORT
THE ANCHOR POINT**

⚠ A FALL RESCUE PLAN SHOULD BE DEVELOPED PRIOR TO USING SAFETYLINK EQUIPMENT.

⚠ Persons working at heights should not work alone.

It is critical that before using any SafetyLink Systems a fall rescue plan is in place for any persons suspended mid-air following a fall. Serious injury or death can occur in a matter of minutes, particularly if a person's movement or breathing is restricted or loss of consciousness has occurred. In accordance with your fall rescue plan and appropriate first aid procedures it is essential to remove the person from the suspended position as quickly as possible.

In accordance with AS/NZS 1891.4:2009 clause 9.5

EQUIPMENT WHICH HAS ARRESTED A FALL OR SHOWS A DEFECT

Any piece of equipment including both personal and permanently installed items, which has been used to arrest a fall or which shows any defect during operator or periodic inspection shall be withdrawn from service immediately and a replacement obtained if necessary. A label indicating the condition or defect should be attached to the equipment, and it should be examined by a competent person who will decide whether the equipment is to be destroyed or repaired if necessary and returned to service. In the latter case, details of any repair shall be documented and a copy given to the operator.



DISTRIBUTOR:

www.heightsafety.com